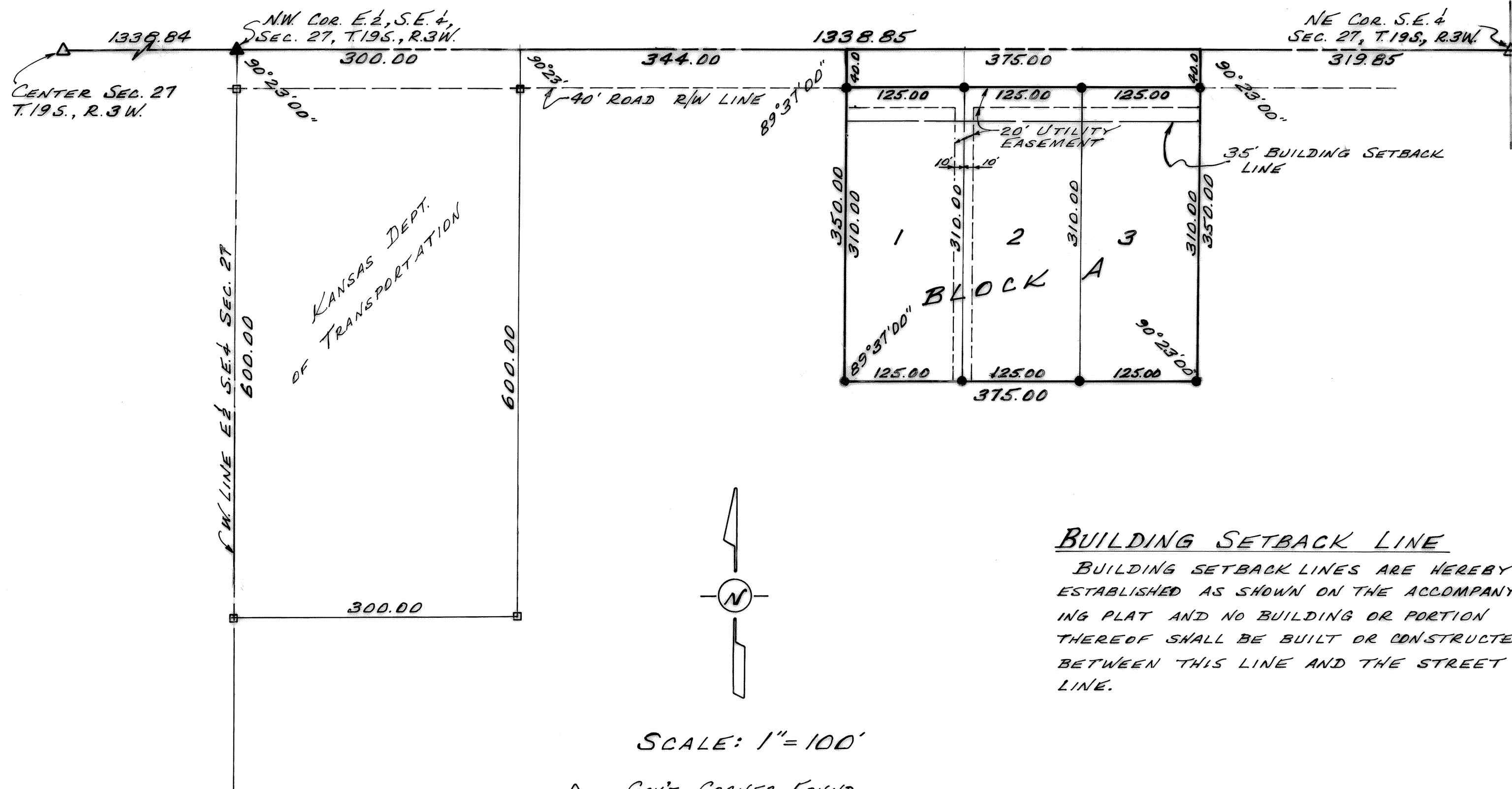


CLING COMMERCIAL ADDITION

A SUBDIVISION IN THE EAST HALF, SOUTHEAST QUARTER, SECTION 27
TOWNSHIP 19 SOUTH, RANGE 3 WEST OF THE SIXTH PRINCIPAL MERIDIAN
IN McPHERSON COUNTY, KANSAS.

2393 X
State of Kansas, McPherson Co. 58
This instrument was filed for record
on the 2nd day of July 1980
at 11:30 o'clock a.m. and duly recorded
in book Plat A on page 64
Kessie Nelson
Deputy Register of Deeds
June 20, 1980



BUILDING SETBACK LINE

BUILDING SETBACK LINES ARE HEREBY ESTABLISHED AS SHOWN ON THE ACCOMPANYING PLAT AND NO BUILDING OR PORTION THEREOF SHALL BE BUILT OR CONSTRUCTED BETWEEN THIS LINE AND THE STREET LINE.

SCALE: 1"=100'

- △ - Gov't. CORNER FOUND
- ▲ - Gov't. CORNER SET
- - R/W MARKER FOUND
- - 5/8" X 24" IRON PIN SET

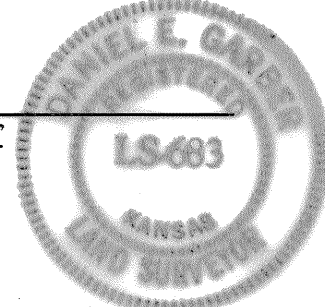
DESCRIPTION:

COMMENCING AT THE NORTHWEST CORNER OF THE EAST HALF OF THE SOUTHEAST QUARTER OF SECTION 27, TOWNSHIP 19 SOUTH, RANGE 3 WEST OF THE SIXTH PRINCIPAL MERIDIAN; THENCE EAST ALONG THE NORTH LINE OF SAID S.E. 4 644.00 FT. FOR A PLACE OF BEGINNING; THENCE CONTINUING EAST WITHOUT DEFLECTION 375.00 FT.; THENCE WITH A DEFLECTION ANGLE 90° 23' 00" RIGHT-SOUTH PARALLEL WITH THE WEST LINE OF THE E. 2 OF SAID S.E. 4 350.00 FT.; THENCE WITH A DEFLECTION ANGLE 89° 37' 00" RIGHT-WEST PARALLEL WITH THE NORTH LINE OF SAID S.E. 4 375.00 FT.; THENCE WITH A DEFLECTION ANGLE 90° 23' 00" RIGHT-NORTH PARALLEL WITH THE WEST LINE OF THE E. 2 OF SAID S.E. 4 350.00 FT. TO THE PLACE OF BEGINNING CONTAINING 3.01 ACRES IN McPHERSON COUNTY, KANSAS.

SURVEYOR'S CERTIFICATE:

I HEREBY CERTIFY THIS PLAT TO BE A TRUE, CORRECT AND COMPLETE REPRESENTATION OF THE PROPERTY DESCRIBED ABOVE AND THAT THE LOT CORNERS HAVE BEEN ESTABLISHED AND MARKED WITH PERMANENT MONUMENTS AS SHOWN HEREON, AS SURVEYED BY ME, THIS 27TH DAY OF JUNE, 1980.

Daniel E. Garber
DANIEL E. GARBER R.L.S.



EASEMENTS:

EASEMENTS ARE HEREBY DEDICATED TO THE PUBLIC, THE RIGHTS-OF-WAY OF WHICH ARE SHOWN AS DASHED LINES ON THE ACCOMPANYING PLAT. SAID EASEMENTS MAY BE EMPLOYED AS A COVENANT RUNNING WITH THE LAND FOR THE PURPOSE OF INSTALLING, REPAIRING, REINSTALLING, REPLACING AND MAINTAINING ANY FORMS AND TYPES OF PUBLIC UTILITIES NOW OR HEREAFTER GENERALLY UTILIZED BY THE PUBLIC.

STREETS:

STREETS SHOWN ON THIS PLAT AND NOT HERETOFORE DEDICATED TO THE PUBLIC ARE HEREBY SO DEDICATED.

DEDICATION:

WE, THE UNDERSIGNED, DO HEREBY CERTIFY THAT WE ARE THE OWNERS OF THE PROPERTY DESCRIBED HEREON AND HAVE SUBDIVIDED THE SAME INTO LOTS IN THE MANNER SHOWN ON THE ACCOMPANYING PLAT. SAID SUBDIVISION SHALL BE KNOWN AS "CLING COMMERCIAL ADDITION", A SUBDIVISION IN THE E. 2, SE 4, SECTION 27, T19S., R.3W. OF THE 6TH P.M. IN McPHERSON COUNTY, KANSAS.

WE HAVE CAUSED THESE PRESENTS TO BE SIGNED THIS 27TH DAY OF JUNE, 1980.

Lee I. White } OWNERS OF LOT 1, }
Margaret White } BLOCK A }
Wayne L.V. Cling } OWNERS OF LOTS 2 & 3, }
Mildred Cling } BLOCK A }

STATE OF KANSAS } S.S.
COUNTY OF McPHERSON }

THE FOREGOING INSTRUMENT WAS ACKNOWLEDGED BEFORE ME THIS 27TH DAY OF June, 1980. BY LEE I. WHITE AND MARGARET WHITE, HUSBAND AND WIFE, AND WAYNE L.V. CLING AND MILDRED CLING, HUSBAND AND WIFE.

Anna Mae Parr
NOTARY PUBLIC

STATE OF KANSAS } S.S.
COUNTY OF McPHERSON }

BE IT KNOWN, THAT THE ATTACHED PLAT WAS SUBMITTED TO ME AND THAT THE SAME WAS HEREBY APPROVED THIS 2ND DAY OF July, 1980.
SIGNED: Charles H. Tracy P.E.
CITY ENGINEER

STATE OF KANSAS } S.S.
COUNTY OF McPHERSON }

BE IT KNOWN, THAT THE ATTACHED PLAT WAS SUBMITTED TO ME AND WAS APPROVED THIS 3RD DAY OF July, 1980.
SIGNED: Melvin Johnson P.E.
COUNTY ENGINEER

STATE OF KANSAS } S.S.
COUNTY OF McPHERSON }

BE IT KNOWN, THAT THE ATTACHED PLAT WAS SUBMITTED TO ME AND WAS APPROVED THIS 3RD DAY OF July, 1980.
SIGNED: Edt. Board
GEN. MGR. BOARD OF PUBLIC UTILITIES

STATE OF KANSAS } S.S.
COUNTY OF McPHERSON }

BE IT KNOWN, THAT THE ATTACHED PLAT WAS SUBMITTED TO ME AND WAS APPROVED THIS 4TH DAY OF July, 1980.
SIGNED: Jim E. Laybelle
COUNTY ATTORNEY

STATE OF KANSAS } S.S.
COUNTY OF McPHERSON }

BE IT KNOWN, THAT THE ATTACHED PLAT WAS SUBMITTED TO US AND WAS APPROVED THIS 1ST DAY OF July, 1980.
SIGNED: William W. Hobbs
CHAIRMAN, CITY PLANNING COMMISSION

STATE OF KANSAS } S.S.
COUNTY OF McPHERSON }

BE IT KNOWN, THAT THE ATTACHED PLAT WAS SUBMITTED TO US AND WAS APPROVED THIS 7TH DAY OF July, 1980.
SIGNED: Silbert D. Gallo
CHAIRMAN, COUNTY PLANNING BOARD

STATE OF KANSAS } S.S.
COUNTY OF McPHERSON }

BE IT KNOWN, THAT THE ATTACHED PLAT WAS SUBMITTED TO ME AND WAS APPROVED THIS 2ND DAY OF July, 1980.
SIGNED: Henry C. Greer
CITY ATTORNEY

STATE OF KANSAS } S.S.
COUNTY OF McPHERSON }

BE IT KNOWN, THIS PLAT HAS BEEN APPROVED AND ACCEPTED THIS 7TH DAY OF July, 1980.
ATTEST: Margaret Brown } SIGNED: Waldo Anderson
COUNTY CLERK } CHAIRMAN, McPHERSON COUNTY COMMISSION

STATE OF KANSAS } S.S.
COUNTY OF McPHERSON }

BE IT KNOWN, THAT THE ATTACHED PLAT WAS SUBMITTED TO THE CITY COMMISSION OF THE CITY OF McPHERSON, KANSAS AND THAT IT WAS APPROVED AND SAID APPROVAL IS RECORDED IN THE MINUTES ON THE 1ST DAY OF July, 1980.
ATTEST: John Peterson } SIGNED: Walter
CITY CLERK } MAYOR

STATE OF KANSAS } S.S.
COUNTY OF McPHERSON }

THIS INSTRUMENT WAS FILED FOR RECORD IN THE REGISTER OF DEEDS OFFICE AT _____ ON THE _____ DAY OF July, 1980.
SIGNED: Kessie Nelson
REGISTER OF DEEDS

ENTERED ON TRANSFER RECORD THIS 7TH DAY OF July, 1980.
SIGNED: Margaret Brown
COUNTY CLERK